



Fitting Instructions

TOWBAR F146U
Ford Focus Hatch Zetec-S 2008- For
(Diffuser style rear bumper) F146
F146Q

MATERIALS

A	1	Cross Bar
B	2	Side Arm
C	4	M12 x 35 x 1.75mm Bolts, Lock Washers and Nuts
D	4	M10 x 35 x 1.5mm Bolts, Lock Washers, Flat Washers (30mm O.D.) and Witter Cage Nuts & Retainers
ZB	1	Electrical Plate Bracket
ZE	1	Electrical plate (Z99)
ZQ	1	Neck Kit (ZF3002 or ZQ3025)

FITTING

- 1 Remove bumper (2 wheel arch screws each side, 1 nut behind wheel arch liner each side, disconnect cable from bumper lights, 2 screws on top edge next to light clusters, 2 screws on bottom edge of bumper. Pull bumper tips outwards then pull bumper rearwards.
- 2 Remove bumper beam.
- 3 Pre-assemble the four Witter Cage Nuts and insert two into each Side Arm (B). Take care to insert into the correct side of each Side Arm as shown below.
- 4 Insert Side Arms (B) into chassis and attach from the outside of the chassis using fasteners (D).
- 5 Loosely attach Cross Bar (A) to Side Arms (B) using fasteners (C).
- 6 Assemble the chosen Neck option (ZQ) and Electrical Plate Bracket (ZB) to Cross Bar (A) using fasteners from the Neck kit. (See below to choose the correct hole set for mounting the Neck)
- 7 Fit Retractable Electrical Plate
- 8 **Fully tighten all bolts.**
- 9 Re-fit bumper.

For use with either

F146 Flange neck option – ZF3002. *Note:* This tow bar must be used with either a Witter tow ball (part number Z11) or Class A50-1 or A50-X tow ball dimensionally Conforming to A50-1 with a 'D' and 'S' value greater than or equal to that of the tow bar.

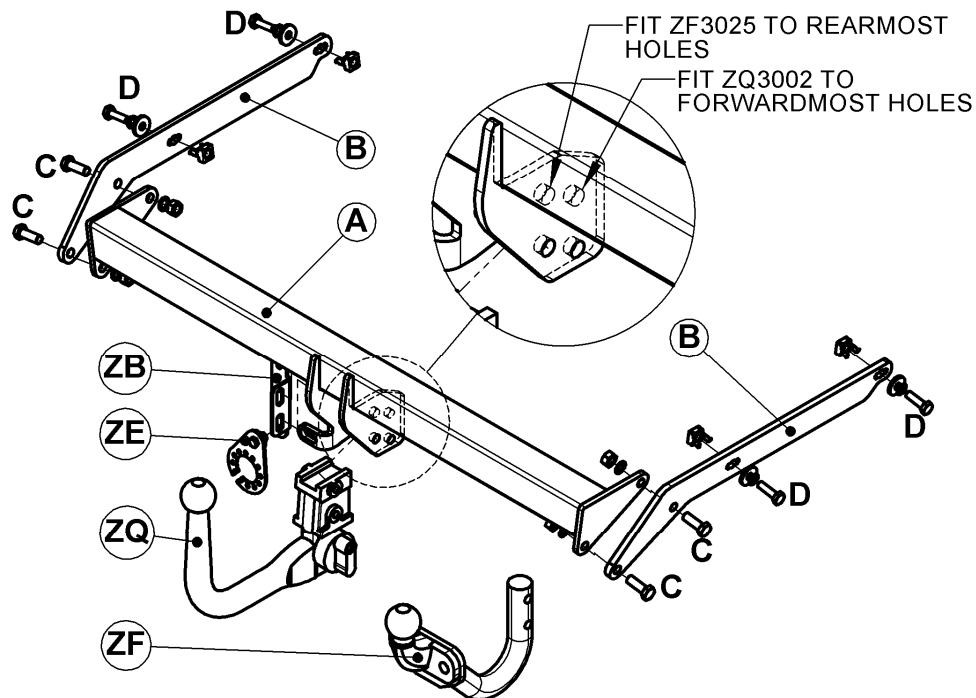
F146Q Detachable neck option – ZQ3025. Please refer to ZQ fitting instructions for installation

Please refer to the vehicle specification for the trailer weight and nose limits, which **must be observed**.

Recommended torque settings:

Grade 8.8 bolts: M8 - 24Nm, M10 - 52 Nm, M12 - 80 Nm, M14 - 130 Nm, M16 - 200 Nm

Grade 10.9: M12 – 120Nm, M10 – 70Nm, M8- 35Nm



W0001F146U-FIT\$011008120000